

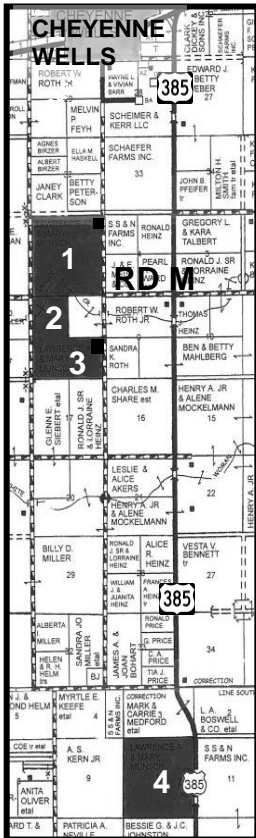
1,750+ ACRES CHEYENNE COUNTY, COLO & 320 AC NON-PROD MINERAL RIGHTS-KIOWA CO, COLO

ABSOLUTE LAND & MACHINERY AUCTION

TUESDAY, MARCH 30, 2021 @10:30 AM, MDT

SELLER: LAWRENCE MUNSCH ESTATE,
DUSTY TALLMAN – PR

AUCTION LOCATION: 4-H
BLDG, Cheyenne Wells, CO



LEGAL DESCRIPTIONS:

CHEYENNE COUNTY:

- TRACT 1: All of 5-15-44, less imp, 615.48 ac cropland, 15.23± ac grass
- TRACT 2: NW/4 of 8-15-44, 123.86 ac cropland, 34.00± ac grass
- TRACT 3: S/2 of 8-15-44, less imp, 163.01 ac cropland, 143.49± ac grass
- TRACT 4: All of Section 10-16-44, 637.42 ac cropland

KIOWA COUNTY – MINERAL RIGHTS ONLY:

- TRACT 5: 100% of N/2SW/4 in 17-18-46
- TRACT 6: 50% of W/2 & W/2E/2 in 28-18-46
- TRACT 7: 50% of W/2SW/4 in 21-18-45

CROPS: Buyers will receive 100% of the 2021 wheat crop.

POSSESSION: Date of closing.

FARM MACHINERY WILL SELL IMMEDIATELY FOLLOWING THE LAND SALE AT THE 4-H BUILDING



TRACTORS: •'08 JD 9330 BB •'07 JD 7420 w/JD loader

TRUCK: •'74 Chevy C65

TRAILERS: •'04 Diamond D 20' GN stock trailer

•6'X18' flatbed w/dbl axle •24' flatbed GN w/dbl axle

•Hale 16' stock trailer

GRAIN CART: •'11 J&M 875



FARM MACHINERY: •'12 JD 1830 60' airseeder w/'12

JD 1910 cart •'18 Minimizer 9540, 9X6 blade plow

•AND MORE – SEE SALE BILL ON-LINE!



For complete sale bill visit www.farmandranchrealty.com



FARM & RANCH REALTY, INC.

1420 W. 4TH • P.O. BOX 947 • COLBY, KS 67701

TELEPHONE: (785) 462-3904 OR 800-247-7863

Donald L. Hazlett, Broker • www.farmandranchrealty.com



NEAL MANN, Listing Agent

(785-635-2102)